



Glen Terrace | Hipperholme | Halifax | HX3 8EJ

Asking price £155,000



SHERIDAN  
BAILEY  
PROPERTY



## Glen Terrace | Hipperholme Halifax | HX3 8EJ Asking price £155,000

This attractive two-bedroom mid-terrace home offers spacious and contemporary styled accommodation in a highly sought-after residential area, making it ideal for first-time buyers, small families, or those looking to downsize. Well maintained and presented in good condition.

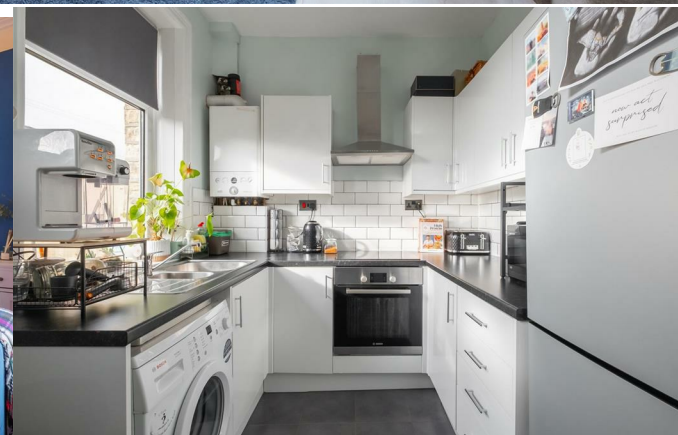
The property briefly comprises two generously sized double bedrooms, house bathroom, a spacious lounge, and a kitchen. Ample storage throughout the property and low maintenance front and rear gardens

Situated in a popular location with easy access to local amenities, reputable schools, and strong transport links, this is a well-rounded home that offers both comfort and potential. Viewing is highly recommended to appreciate all it has to offer.

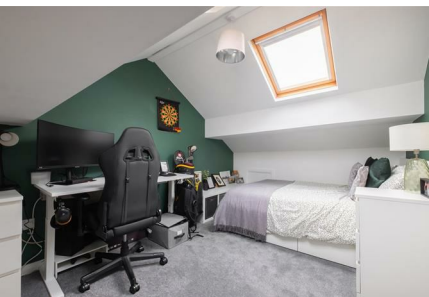
- Excellent first time buyer opportunity
- Spacious and well presented
- Sought after area of Hipperholme
- 2 generous double bedrooms

### Living Room

Front door opens up into a spacious, beautifully presented and contemporary styled Living Room, with feature fireplace and inset gas fire, light grey laminate flooring and large window to front. Space for a 4 seater dining table and chairs.







### **Kitchen**

Modern Kitchen with a range of matching white wall and base units with worktops over. Integrated appliances include, low level electric oven, 4 ring induction hob with stainless steel extractor over. Plumbing for washing machine and space for larger style fridge freezer. Contemporary styled splashbacks, stainless steel sink and mixer over. Window to rear garden. Useful store cupboard off, door for rear access to garden sitting area. Staircase off to first floor landing.

### **Staircase to first floor landing**

### **Bedroom 1**

Generously sized and well presented double bedroom with large window to front. Ample space of large double wardrobes and bedroom furniture.

### **Bathroom**

Partially tiled white 3 piece bathroom suite comprising, bath with electric shower over, pedestal wash handbasin and step up to WC. Frosted window to rear. Useful store cupboard

### **Inner Hallway**

Light and bright inner hallway with large window to rear and bespoke fitted understairs storage.

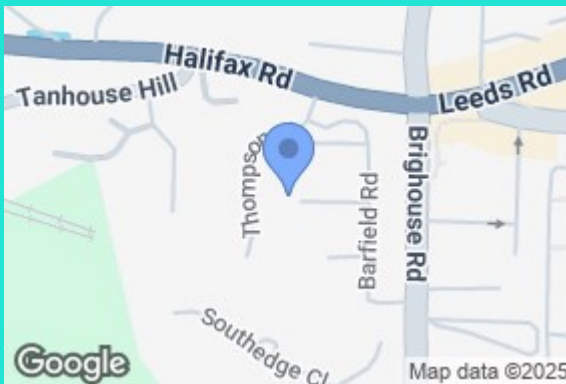
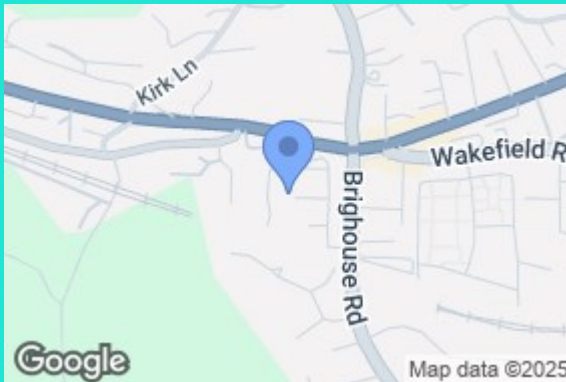
### **Staircase to 2nd floor**

### **Bedroom 2**

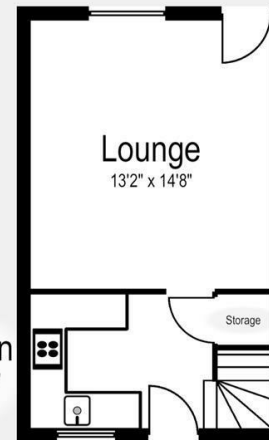
Another generously sized double bedroom with twin velux windows.

### **Outside Space**

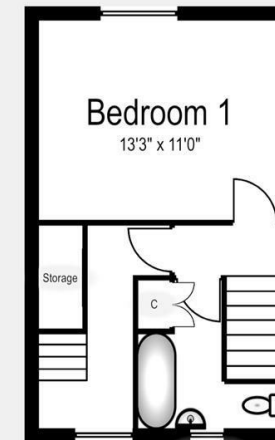
To the front of the property is a good sized resin, low maintenance garden space. To the rear is private with space of garden furniture and useful shed. Gated access.



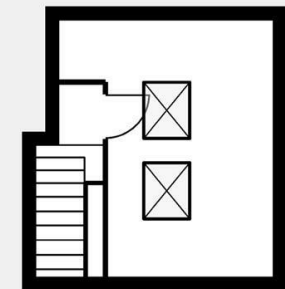
Front Ground



1st Floor

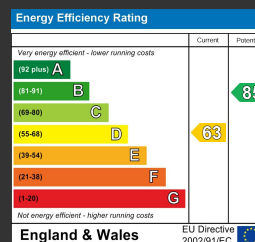


2nd Floor



HX3 8EJ  
Internal - 760ft2

This floor plan has been created for illustrative purposes only.  
Measurements/dimensions are approximate and layout should only be used for guidance.  
Not all storage spaces will be displayed. Internal area is an estimation.



HALIFAX  
West Yorkshire

01422 525285  
hello@sheridanbaileyproperty.co.uk  
sheridanbaileyproperty.co.uk